

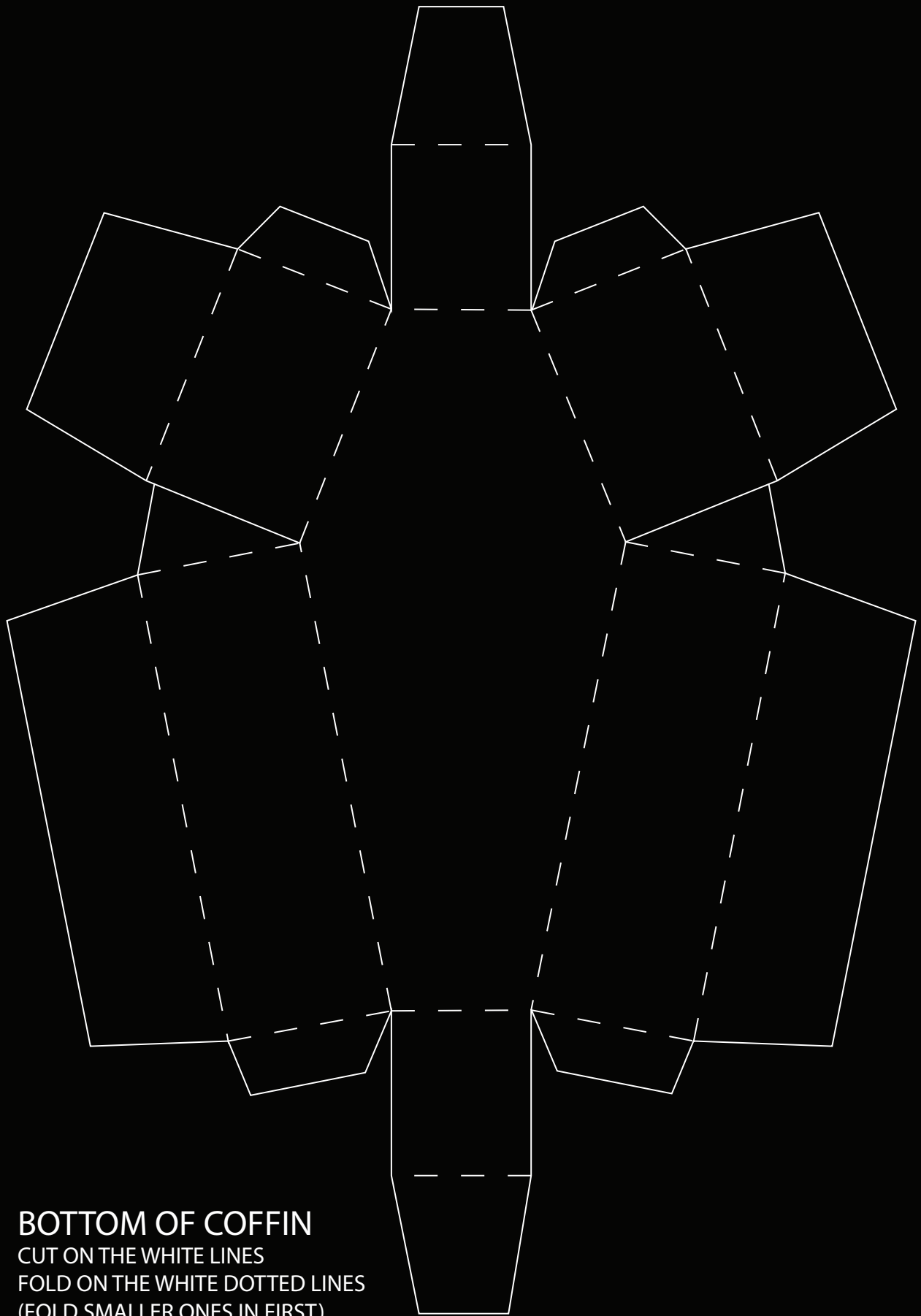
TOP OF COFFIN

CUT ON THE WHITE LINES

FOLD ON THE WHITE DOTTED LINES

(FOLD SMALLER ONES IN FIRST)

TAPE FOLDED SIDES TOGETHER



BOTTOM OF COFFIN

CUT ON THE WHITE LINES

FOLD ON THE WHITE DOTTED LINES

(FOLD SMALLER ONES IN FIRST)

TAPE FOLDED SIDES TOGETHER



LINING OF INSIDE COFFIN

CUT OUT EACH SHAPE

MATCH TO THE SHAPE IN THE BOTTOM
OF THE COFFIN

TAPE / GLUE "LINING" OF THE COFFIN